

Academy for Lifelong Learning

A Program of the Oregon State University Alumni Association

Spring 2009 Schedule Of Classes

- ARTS
- HUMANITIES
- SCIENCE
- ISSUES & IDEAS
- WORLD CULTURES:
ITALY



CLASSES BEGIN MARCH 31

www.ALL-osuaa.org

**S
P
R
I
N
G

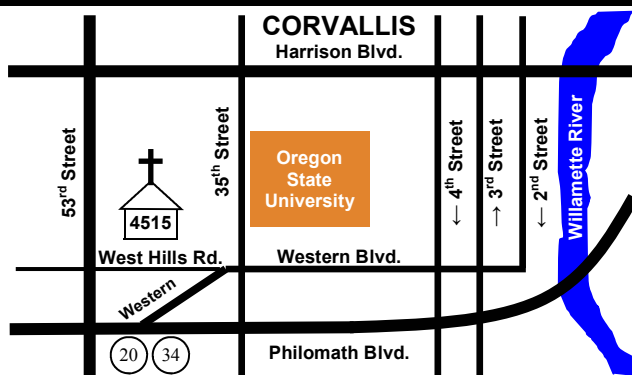
2
0
0
9**

WHAT IS ALL?

The Academy for Lifelong Learning (ALL), established in 2002, is a self-funded, peer-led, membership organization. ALL embraces learning as a lifelong process. As such, members, now numbering more than 300, support the Academy's objectives through their participation as students, as presenters, and generally in the successful operation of the program. In addition to the administrative body, the ALL Advisory Council, and the ALL Curriculum Committee, there are several other committees essential to the total effort. *Your involvement in ALL beyond being a student is welcomed and encouraged. Please contact any member of the Advisory Council or Curriculum Committee for additional information. Get ALL involved! You do not need to be an OSU alumnus or a retiree to be a member of ALL.* Periodic socials (coffee/tea) are held throughout the term in the Fireside Room before or after classes for people to visit and share ideas. There will be advance announcements of dates and times. Class suggestions are welcome and encouraged.

WHERE ARE THE CLASSES HELD?

Most ALL classes meet in the Meeting Room of the First Congregational Church, United Church of Christ. The church is located at 4515 SW West Hills Road, about a mile west of 35th Street. The Church has ample parking behind the building. Headsets for enhanced hearing during the classes are available for use. Class attendees are asked to turn off (or set to vibrate only) all cell phones and pagers during classes.



HOW DO I JOIN?

Membership in ALL is **\$100** per year. While you do not have to be affiliated with OSU in any way or a member of the OSU Alumni Association (OSUAA), there is a five percent reduction in the ALL membership fee for those who are members of OSUAA. You may attend as few or as many classes as you wish for a full year beginning the term in which you join. (Additional fees are charged for a few classes to cover books, travel, class materials, meals, etc.). If you attended just two out of every three classes offered, each class would cost less than **\$1** to attend — **What A Deal!!**

HOW DO I PAY?

You can pay either by personal check or with a credit card. Just enter the appropriate information in the specified area on the Registration Form. Your personal information will be handled with care and without risk of identity theft or misuse of credit card information.

Please register as soon possible and certainly before March 23rd. Registrations will be accepted after that date, but limited-size classes fill quickly. Join or register today!

WHAT IS THE CLASS CANCELLATION POLICY?

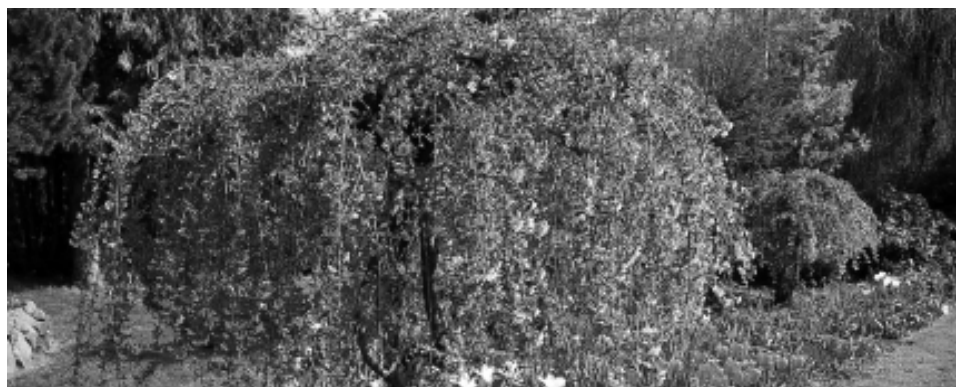
If weather is questionable, members must evaluate their personal risk in attending classes. It should be noted that in icy conditions, the better approach to the Church is from 53rd St. Classes will usually be held unless the Presenter chooses to cancel. If a class must be canceled, ALL will inform members as soon as possible by sending an e-mail notice of cancellation and by placing a cancellation message on the ALL telephone message. **When in doubt, check your email or dial 737-9405.**

HOW DO I CONTACT ALL?

Address: Academy for Lifelong Learning
OSU Alumni Association
204 CH2M Hill Alumni Center
Corvallis, Oregon 97331-6303
Phone: **(541) 737-9405** and leave a message. We will try to return your call within 24 hours.
E-mail: admin@all-osuaa.org
Web: www.ALL-osuaa.org
(Includes the current class descriptions and Registration Form)

CONTENTS

	PAGES
ADVISORY COUNCIL & CURRICULUM COMMITTEE	4
ARTS	4 - 5
HUMANITIES	6 - 7
SCIENCE	8 - 9
ISSUES & IDEAS	10 - 11
ITALY	12 -13
CLASS SELECTION - YOUR COPY	14
CALENDAR	15
REGISTRATION FORM	INSERT



ANNOUNCEMENTS

ALL PICNIC:

ALL's Annual Meeting Picnic Dinner will be held Monday, June 8th, 2009 from 5:00 PM to 7:30 PM at the CH2M Hill Alumni Center. The evening's activities will be a chicken dinner, followed by a report of the year's activities and election of new members of the 2009-2010 Council, and ending with musical entertainment. In order to assure an accurate head-count for dinner, an advance nominal charge to members and spouses is \$7 each, with the remaining cost as a benefit of your membership. Non-alcoholic beverages are included in the cost of the dinner. A no-host bar serving wine and beer will also be available. There will be free parking in the lot south of Reser after 5:00 PM.

COST: \$7, SUBMIT PAYMENT WITH CLASS RESERVATION. Picnic deadline June 3rd to sign up and pay.

ALL'S SECOND SUMMER SESSION:

Last summer's summer session was deemed a success, so we are planning another. Like last year's session there will be a single class per week. They will be from all the strands. The classes will meet on Wednesday morning from 10:00 AM to noon starting on July 8 and ending August 12. Some of the classes will be at the church, and others will be around town. Details, including registration, will be available about the first of May. Check our website and weekly announcements (both email and before class) for these details. The summer session is a benefit of your current membership and will be offered at no extra charge.

ADVISORY COUNCIL & CURRICULUM COMMITTEE



ADVISORY COUNCIL

Paul Barkley	Ed Heath	Paula Krane, Chair	Julie Searcy
Alan Chaimov	Denis Jarvis,	Jean Peters, Past Chair	Norm Seward
Paul Dickey, Treasurer	Curriculum Chair	Judy Ringle	Cliff Trow
Maxine Eckes	Bill Kemper, Vice Chair	Don Rounds	Ruth Ann Young
.....			
Ex Officio: Kim Thackray, Administrative Assistant	Scott Elmshaeuser, OSU Alumni Association Liaison	Diane Merten, OSU Alumni Association Board Liaison	

CURRICULUM COMMITTEE: DENIS JARVIS, CHAIR

Arts	Issues & Ideas	Humanities	Science	Resource Members
Art Bervin	Ed Heath	Ruth Arent	Ron Coffey	Paula Krane
Lois Courtney	Bill Hohenboken	Barb Callner	Denis Jarvis	Charles Meieiercks
Erika Schoell	Bill Kemper	Doug Clark	Len Maki	Jean Peters
Brookes Spencer	Becky McKenzie	Cliff Trow	Don Rounds	Dan Youngberg
Glenn Theodore	World Cultures	Dick Weinman		
	Keith Dunlap			
	David Eiseman			
	Lloyd Swanson			

PUBLICATIONS EDITING & PUBLISHING: BILL KEMPER

NOTE: ALL classes dealing with Darwin or evolution will be marked with the Darwin icon:  Classes marked with  deal with the Sesquicentennial celebration in Oregon of the 150th anniversary of Oregon's birthday as a state.

1. ARTS

SPRING 2009

Tuesdays, 9:30 - 11:30 PM unless otherwise noted in the class listing



Mini Reviews

Tuesday, March 31, 9:30

This session will be an experimental variation on our popular Spring time Mini Review Program. Today we will explore some early responses to Darwinism in several different realms of thought and context.

Host: Brookes Spencer

Carmina! A Medieval Feast for All Times

Tuesday, April 7, 9:30

After Carl Orff composed *Carmina* in 1937, he demanded that his publisher withdraw and destroy all of his previously published works, such was his conviction that he had truly found his compositional voice. Dr. Steven Zielke, Director of Choral Studies at OSU, will present a preview of the Corvallis-OSU Symphony Orchestra performance with the Corvallis Repertory Singers and combined OSU choirs of Orff's remarkable work. He will include an introduction of the musical material as well as the remarkable 13th-century poetry that forms the text.

Host: Lois Courtney

Anticipating Ashland: Sarah and the Boys

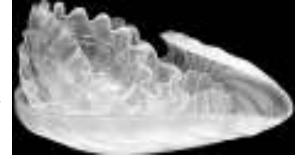
Tuesday, April 14, 9:30

This season, the Oregon Shakespeare Festival includes three American shows: a musical, a long-neglected drama, and a comedy by one of our hottest young playwrights. Robert Leff, director and American theater historian, will share background and insight for *The Music Man* by Meredith Wilson, *Paradise Lost* by Clifford Odets, and *Dead Man's Cell Phone* by Sarah Ruhl. He will do the same for the Italian comedy on the bill, *The Servant of Two Masters* by Carlo Goldoni, a play he directed 36 years ago. He will review the productions based on his recent trip to Ashland.

Host: Lois Courtney

Contemporary Glass**Tuesday, April 21, 9:30**

Bill Siebler, retired LBCC teacher and administrator, will present an illustrated overview of the Contemporary Glass movement that began in the 1960s. He will cover the technical and artistic aspects of the movement, which has profoundly affected art, architecture, design, and style. A collector for more than 30 years, Bill will display a number of pieces and discuss the formats, styles, and techniques of the leading glass artists.



Host: Art Bervin

Writing as Partners**Tuesday, April 28, 9:30**

Sandy and Peter Jensen, published poets and writing instructors at LBCC, talk about their writing life together. They will offer an interactive presentation, alternating reading of short poems and prose pieces.

Host: Art Bervin

Art, Artists, Galleries, and Frames**Tuesday, May 5, 9:30**

Bill Shumway--painter, printmaker, restorer, framer, curator, and Pegasus Gallery owner, earned an MA in painting at UMass in Amherst and operated galleries in Amherst, Northampton, and Martha's Vineyard before moving from his native Massachusetts in the mid-1970s. Though rooted in abstract expressionism, Bill will cover all the perspectives and styles he employs, providing a rare overview in how art functions.

Host: Glenn Theodore

Finding Your Artistic Eye or How a Bulldozer Driver Can Influence Your Photography**Tuesday, May 12, 9:30**

Terry Tallis's lifelong love of art and photography have led to award-winning entries in juried shows. He will challenge participants to experiment with the camera and to discover the creative "eye" that produces great photographs.

Host: Glenn Theodore

Music in the Twentieth Century: New Directions III- Nationalism**Tuesday, May 19, 9:30**

David Eiseman, OSU Professor Emeritus of Music. The turn into the 1900s through the following few decades denoted change and new directions of all sorts: expressionism, primitivism, nationalism, along with *other isms*. Culminating this year's survey of new directions, we will consider what constitutes nationalism in music, the means and intent in evoking nationhood, with reference to examples from the works of composer Hungarian Bela Bartok, and Americans Charles Ives and Aaron Copland.

Host: Brookes Spencer

Donald Hall and Jane Kenyon: Successful in Poetry and Marriage**Tuesday, May 26, 9:30**

Some have not. But Donald Hall (U. S. Poet Laureate in 2004) and Jane Kenyon (New Hampshire's Poet Laureate until her death in 1995 and translator of Russian poetry) succeeded. Marjorie Goss, retired English professor from Cottey College in Missouri, will explore how they managed to be poetically productive and happily married, with illustrative poems of each writer.

Host: Art Bervin

Public Art: A Guided Art Stroll along Madison Avenue**Tuesday, June 2, 9:30**

Hester Coucke, an art historian and a former art docent at Amsterdam's Rijksmuseum, is currently the curator at The Corvallis Arts Center. She will lead us on a tour to discover the hidden public art treasures in downtown Corvallis. Meet at the Corvallis Arts Center, 700 SW Madison. 🚗

Host: Erica Schoell

And now for something completely different...A Steady-State [no-growth] Economy! Tues., March 31, 1:30

Dr. Richard Clinton, OSU Professor Emeritus of Political Science, returns to challenge our thinking again. More than thirty years ago, ecological economist Herman Daly sketched out a viable alternative to our patently unsustainable greed- and growth-based economic system. Few paid any attention, but in light of current developments, both ecological and economic, “perhaps they’ll listen now.” Dr. Clinton will submit for examination a “steady-state economy” and the required increase in moral growth in our nation that would enable us to cease defying physical, ecological, and psychological limits and, instead, live a more satisfying life safely within our means.

Host: Doug Clark

Oregon v. Muller: Women's Rights in the Workplace

Tuesday, April 7, 1:30

A colorful cast of characters surrounds the 1908 U.S. Supreme Court decision in *Oregon v. Muller*, which protected women workers in factories and laundries from excessive work hours. But did the Court's ruling go too far in 'protecting' women, and did it advance or undermine the principle of gender equity in the workplace? The discussion, led by Associate Justice Robert D. Durham of the Oregon Supreme Court, will explore the human drama and the legal issues in a landmark case that demonstrates that we must “be careful what you wish for, because your wish may come true.”

Host: Barb Callner



Celebrating Lincoln: A Review of Two New Books

Tuesday, April 14, 1:30



As part of the Bicentennial Celebration of Lincoln's birth, Cliff Trow, OSU Professor Emeritus of History, will offer an assessment of John Stauffer's *Giants: the Parallel Lives of Frederick Douglass and Abraham Lincoln* and James M. McPherson's *Tried by War: Abraham Lincoln as Commander in Chief*. Each of these books is written by an award-winning scholar and is an important addition to the Lincoln genre.

Host: Cliff Trow

Making Finance Personal--the Founding of brass Media

Tuesday April 21, 1:30

From an idea to reality, this presentation will share the experiences of building a local business from the ground up and will highlight the challenges and rewards of growing to a nationally recognized company. Presented by Steve Sims, COO and co-founder.

Host: Ruth Arent



Oregon Politics, the Economic Crunch, and the Age of Obama

Tuesday, April 28, 1:30



Bill Lunch, Chair of the OSU Political Science Department and OPB political analyst, will share his diagnosis of the work of the '09 Oregon Legislature, four months into the session. This class will focus in particular on the struggle to establish state spending priorities in the context of the national credit crisis. The discussion will also explore the nature and effects of the Obama administration's stimulus plan and regulatory reform on policymaking in Oregon.

Host: Doug Clark

Dust Bowl Stories: Artistic Documentation of the Great Agricultural Crisis **Tuesday, May 5, 1:30**

Lawrence Rodgers, OSU Dean of Liberal Arts, discusses the 1930s Dust Bowl. In 2006, Timothy Egan won the National Book Award for *Worst Hard Time*, a non-fiction account of the great American Dust Bowl of the 1930s. Dr. Rodgers introduces Egan's work as a way of moving into a broad consideration of the varied ways in which a generation of American artists, writers, photographers, filmmakers and singers represented what has been called the worst man-made ecological disaster in human history. The goal is not only to illustrate the rich cultural response that the dust bowl elicited, but to point out the significance of this response in shaping our current conceptions of the 1930s American identity. The talk is multimedia, illustrated by relevant examples throughout.

Host: Cliff Trow

Barack Obama's Eloquence **Wednesday, May 13, 1:30**

Robert Iltis, OSU Associate Professor and Chair of Speech Communication, will discuss Obama's inaugural address. Public commentators observed during the 2008 presidential campaign that the high quality of Barack Obama's oratory contributed significantly to his success. Given that foregrounding, expectations for his inaugural address were set high, with comparisons made in advance to other inaugurals presented in times of crisis, especially those of Abraham Lincoln and Franklin Roosevelt. This lecture examines Obama's inaugural address as it fits into the genre of inaugural addresses - a distinctive type of presidential oratory - and assesses its structure, argument and style.

Host: Cliff Trow

A Visit to Beit Am **Tuesday, May 19, 1:30**

Benjamin Barnett, Rabbi of Beit Am Mid-Willamette Valley Jewish Community, will take participants on a tour of this facility. He will elaborate on its mission of presenting diverse opportunities for Jewish religious worship, providing quality education, maintaining structures for charitable activities, and offering social activities that will reinforce a sense of community. We will meet at Beit Am, 625 NW 36th St in Corvallis. Parking is on the street. 🚗

Host: Barb Callner

Whatever Happened to Dick and Jane? **Tuesday, May 26, 1:30**

Women around Corvallis told him they woke up with him every morning. His voice was heard on commercial radio and film narrations on PBS, and his company produced commercials seen on Corvallis cable channels. He initiated and developed local TV programming by creating the student TV station KBVR. He's a father of 12 children and was a caregiver to an Alzheimer victim. He's an actor and a poet. Those are some of the many facets of Dick Weinman, OSU Professor Emeritus of Media Communication. Jane White, ALL member and colleague in acting, directing, writing, and teaching, will interview Dick and take us into the psyche of this creative septuagenarian.

Host: Barb Callner

Benton County, the Early Years **Tuesday, June 2, 1:30**

As part of ALL's celebration of Oregon's Sesquicentennial, Judy Juntunen, local historian and retired staff member of the Benton County Museum, takes us back to the early days of Benton County. What brought Euro-Americans to the place we now call Benton County? Who was living here before they arrived? What impact did the newcomers have on these people and the land? What was life like for county residents in the 19th century? "Benton County, the Early Years" is an opportunity to have these questions answered and learn more about our local history.

Host: Cliff Trow



3. SCIENCE

SPRING 2009

Wednesdays, 9:30 - 11:30 AM unless otherwise noted in the class listing

Coffee and Health: the Perks and Risks

Wednesday, April 1, 9:30



Victoria Drake, OSU Linus Pauling Institute Research Associate, will examine the health effects associated with coffee drinking. Coffee is a complex mixture that contains more than a thousand different chemicals. In addition to caffeine, Victoria will discuss antioxidants, hypoglycemic agents, and many other bioactive compounds in coffee, and review the potential health benefits and risks of this popular beverage. Basic information about nutritional epidemiology will also be presented.

Host: Ron Coffey

Visit to Hesthaven Nature Center, 8590 Oak Creek Drive, West Corvallis

Wednesday, April 8, 9:30

Join a group visit to this local gem, 5.75 acres developed by the Audubon Society since 1993. An educational docent will provide background to the museum exhibits and then indicate native plants and seasonal happenings during a half-mile amble along the Center trails. Wear stout shoes, and come prepared for the forecast weather. The group is limited to 30, but a waiting list will be maintained in case someone cancels near the date. Parking is limited, so we will car pool from the Congregational Church at 9:15 AM and return by 11:45 AM. The tour is free, but you may make a donation at the Center. \$5 is suggested. 🚗

Host: Denis Jarvis

Humor in Medicine

Wednesday, April 15, 9:30

David R. Grube, Physician, Philomath Family Medicine, will discuss the therapeutic benefits of "humor" as medicine. Using clinical anecdotes, true stories, cartoons, personal experiences, and malapropisms, Dr. Grube's presentation reminds us that real life can be funnier than anything one could ever imagine or invent. "The arrival of a clown has a greater influence on the health of a town than 20 asses laden with drugs."

Host: Don Rounds



Geographic Information Systems: The World at Your Fingertips

Wednesday, April 15, 1:30

Explore our earth with GIS and learn about geospatial technologies at work in your neighborhood, city, and global community. This class will cover GIS principles and uses, including visual demonstrations of online mapping technologies and geovisualizations. Michelle Kinzel is a PhD student in Geosciences at Oregon State University, with an interest in GIS in education, science, and conservation.

Host: Denis Jarvis

Introducing and Breeding of a New Berry

Wednesday, April 22, 9:30

Maxine Thompson, OSU Professor Emeritus, Department of Horticulture, will tell about a new research project she has developed since retiring. She found that retirement meant new opportunities. Thompson chose to introduce a new berry and initiate a breeding program to select varieties adapted for the Northwest. Edible-fruited blue honeysuckle bush promises to be an exciting new crop with unique flavors, especially prized for processed products.

Host: Don Rounds



Evolution of Human DNA: The Genome's Eye View

Thursday, April 23, 1:30

Dee Denver, OSU Assistant Professor of Zoology, will describe the "genomic perspective" and basics of the human genome. Discussion will range from the motivations underlying genome projects for humans and other organisms to the scientific strategies for obtaining complete genome sequences. The class will conclude with the topic of "the quest for the \$1,000 human genome" whose goal is to make personalized genomics a reality in the near future and be an important aspect of our health care. **Rescheduled from Winter 2009 Term March 10, 1:30.**

Host: Ron Coffey



Atoms and Artifacts: OSU Reactor Archaeological Studies**Wednesday, April 29, 9:30**

Leah Minc, OSU Assistant Professor, Radiation Center, Neutron Activation Analysis Research Coordinator, will describe current research that utilizes the OSU reactor to analyze ancient artifacts. Through sensitive trace-element studies, archaeological remains can be traced back to their geographic source, enabling archaeologists to determine where the objects were originally produced. Such provenance studies have contributed significantly to our understanding of the past, including insights into Aztec political economy and Inca state religion.

Host: Len Maki

**Genetically Engineered Crops: Greener than You Think****Wednesday, May 6, 9:30**

Walt Ream, OSU Professor of Microbiology, will describe transfer of genes into plants from Agrobacterium, nature's genetic engineer. Agrobacterium has influenced plant evolution, revolutionized agriculture, and improved the course of human history. Topics will include the Agrobacterium-based gene transfer technology, used to create genetically engineered crop plants, for example to cure crown gall disease. The pros and cons of engineered crops widely cultivated today will be discussed.

Host: Ron Coffey

Pest Control Challenges in West Africa**Wednesday, May 13, 9:30**

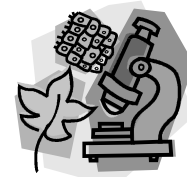
Paul Jepson is the Director of Integrated and Plant Protection Center (IPPC), and OSU Professor of Environmental and Molecular Toxicology. In February 2008, he spoke to ALL about IPCC in the Northwest. He spends part of each year in West Africa and this time will illustrate some of the challenges of crop production and pest management there, where climate, evolution, and adaptation have combined to make the problem harder. He will describe progress through collaborative research and education networks with examples from Morocco, Mali, Senegal, Burkina Faso, and the Arabian Peninsula.

Host: Denis Jarvis

Science Research Projects at Crescent Valley High School**Wednesday, May 20, 9:30**

Adam Kirsch, science teacher at Crescent Valley High School for over 8 years, will introduce students who will describe their science fair research projects. The projects involve original endeavors exploring a wide range of problems in physics, chemistry, biology and ecology. Examples may include new insecticides, bacterial bioluminescence, tree fire resistance, human powered generators, and renewable energy. Drive to Crescent Valley High School and locate room F21. 🚗

Host: Ron Coffey

**Where have all of the Salamanders Gone?****Wednesday, May 27, 9:30**

Deanna (Dede) Olson, U.S. Forest Service Research Ecologist, will describe the extinction event which is currently underway on Earth affecting many species of amphibians (frogs, salamanders, etc.). While the effects of habitat loss, climate change, disease, invasive species, and chemical contaminants offer a bleak outlook, strides in scientific understanding and conservation efforts are unprecedented.

Host: Len Maki

A Potential New Treatment for Tuberculosis**Wednesday, June 3, 9:30**

Tuberculosis is one of the world's worst infectious diseases, taking approx. 1.5 million lives every year. Luiz Bermudez, Head of the Biomedical Sciences Department, OSU College of Veterinary Medicine, has been working with a compound called mefloquine, currently being used to combat malaria. His research team has isolated a component within this drug, which shows the least toxicity and also attacks tuberculosis. It is critical to use this component which would attack TB more quickly than current treatments.

Host: Don Rounds



4. ISSUES & IDEAS

SPRING 2009

Thursdays, 9:30 - 11:30 AM unless otherwise noted in the class listing

Great Decisions - Human Rights

Thursday, April 2, 9:30

This is the final session of Great Decisions 2009, which began in Winter Term. The class is limited to previously enrolled participants, and will follow the format of previous classes. Human Rights will be the topic.

Host: Becky McKenzie

Eastern Oregon Rangeland and Forests: Values and Concerns

Thursday, April 9, 9:30



Forest and rangelands each account for some 43 percent of Oregon land area, and about 50 percent of each type is under state or federal management; enthusiastic stakeholders are many and diverse. Long-term collaborators Marty Vavra (PNW Forestry and Range Sciences Lab, LaGrande) and Rick Miller (OSU Department of Range Ecology and Management) will describe this unique resource, its past and current utilization patterns, issues affecting its conservation and strategies for its multiple and sustainable use.



Host: Bill Hohenboken

The Sustainability Imperative--Lessons Learned and Future Opportunities

Thursday, April 16, 9:30

Natural resource dependent areas (forest and range communities especially) are undergoing dramatic changes. Martin Goebel, President of Sustainable Northwest, will describe these changes and the strategies many are employing to embrace change and move decisively forward. Where conflict-ridden relationships once prevailed, as in the Klamath Basin, cooperative initiatives now enhance economic, ecological, and social outcomes.

Host: Ed Heath

City Government Potpourri

Thursday, April 23, 9:30

Jon Nelson, Corvallis City Manager, will tackle several key questions: In our current economic uncertainties, what new challenges face city government? What will the next five years bring to Corvallis? What do citizens expect of city government? And how can Corvallis balance P, T and G (public process, transparency, and growth)?

Host: Ed Heath

Ranching in the New West

Thursday, April 30, 9:30

An ownership transition with significant implications for biodiversity, ecosystem function, and community stability is underway on the ranchlands of the American West, especially in areas that serve as critical wildlife habitat. OSU Geosciences professor Hannah Gosnell will explore the social and ecological implications of the shift and how rural communities are responding to emerging challenges.



Host: Ed Heath

HP Halo: Experience Video Conferencing First Hand

Tuesday, May 5, 7:00 PM



HP Corvallis, in collaboration with DreamWorks Animation, has designed and is marketing the ultimate in video collaboration. The Halo studio provides life-size, real-time, eye-to-eye conferencing with outstanding audio and no delay. Halo gives the sense of being in the same room together. Come experience Halo with Steve Jewell-Larsen, Halo Manufacturing Director, as a special ALL class for a VERY limited number of students [20]. Please note that this class will be held at the Hewlett-Packard campus in the evening. Details on location will follow registration notification. 🚗

Host: Bill Kemper

Founding and Maintaining a Children's Choir For 25 Years**Wednesday, May 6, 2:30**

Carol Nelson-Rea, Founder and Artistic Director of Heart of the Valley Children's Choir, will highlight HVCC's history, mission, and future in Corvallis. HVCC has toured throughout Europe and China. This choir has grown from 80 singers to over 300 and one choir to five. Some of the current singers will perform during the latter half of the class.

Host: Bill Kemper

Cruising through the Panama Canal**Thursday, May 7, 9:30**

The Panama Canal is a considered one of the wonders of the world. Here is a sharing of a recent cruise through the canal by ALL members Keith and Joan Dunlap. This 15-day cruise proved very interesting with more than a few surprises!

Host: Keith Dunlap

Oregon Health Care Policy: Innovation and Reform**Thursday, May 14, 9:30**

Kelley C. Kaiser, Chief Executive Officer, Samaritan Health Plans, will cover the history of the Oregon Health Plan and what it did for the citizens of Oregon in the 1990s and then move into the current era of reform and the next phase that the health care policy makers in Oregon are looking at in this legislative session.

Host: Bill Kemper

Corvallis Economic Vitality and Sustainability**Thursday, May 21, 9:30**

John Sechrest, Corvallis-Benton Chamber Coalition Economic Development Director, will discuss the Corvallis Business Ecosystem and the current state of economic vitality and sustainability efforts in the Corvallis and Benton County area. He will focus on how economic gardening over the last three years has led to substantial changes in the local conversation and how it led to the creation of the Willamette Angel Conference held on May 14, 2009.

Host: Bill Kemper

150 Two Family Farm Histories: Trees and Sheep to Trees and Nuts**Thursday, May 28, 9:30**

Hazelnut Hill farm of Corvallis was in the Rickard family prior to Oregon statehood. Sally Hilles (5th generation on the farm) will describe farm and family history, culminating in their enterprise which grows and processes hazelnuts, produces disease-resistant nursery stock, and markets confectionary products on-site and on-line. Delbert Kessi will describe the history of cattle, sheep, Angora goat, and timber production on their farm, homesteaded near Harlan by his grandfather in 1911. They have been recognized in statewide competition for progressive management and conservation practices.

Host: Bill Hohenboken

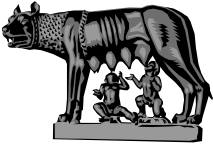
**Your Health and Medicare: How To Be A Savvy Consumer****Thursday, June 4, 9:30**

Cristie Lynch, Marketing Manager, Samaritan Health Plans, will discuss how to compare Medicare insurance options and provide tools for setting your own criteria for rating plans and learn about your choices before and after you have selected a plan. Lee Strandberg, Director, Managed Care Pharmacy for Samaritan Health Plans and OSU Professor Emeritus of Pharmacy, will then discuss what you need to know about navigating the pharmacy benefit of Medicare's Part D drug coverage.

Host: Bill Kemper

It All Began With the Romans

Thursday, April 2, 1:30



Gary Ferngren, OSU Distinguished Professor of History, will present a survey of Roman history that traces the founding of Rome in 753 B.C., its rise to a world power, its decline and fall in 476 A.D. and its legacy that continues to influence Western culture.

Host: Lloyd Swanson

Music in Italian Culture in the Early Modern Period

Monday, April 6, 1:30

Beginning in the late 15th century Italian courts hired Flemish composers and Jewish musicians (after their expulsion from Spain); the Flemish contributing to the development of the madrigal and the Jews to new instrumental forms throughout the 16th century. Marc Vanscheeuwijk, University of Oregon Associate Professor of Music, will discuss how these developments led to the beginning of opera, oratorio, cantata, concerto, and sonata during the Baroque period and how these genres spread throughout Europe in the early 18th century, and, ultimately, why early modern Italy can be considered the cradle of Western music.

Host: David Eiseman

Moving Forward: Italy into the 21st Century

Thursday, April 16, 1:30

OSU Italian instructor and anthropologist Christopher Leoni will present an Italy of the past two decades, identifying key figures and forces that are helping to shape and reshape a nation in search of a balance between past and future. Politician and media tycoon Silvio Berlusconi, Pope Benedict of the Catholic Church, and hip-hop music pioneer Jovanotti will be introduced and discussed, alongside the notions of the first black Italians, the last Italian gypsies, and a nation-wide smoking ban that was implemented effortlessly!

Host: David Eiseman

Liberal Learning in the Renaissance

Wednesday, April 22, 1:30

Lisa Sarasohn, OSU Professor of History, will discuss the emergence of new ideas about learning in the Renaissance and how they contributed to a new social type: the Renaissance man (and woman). The talk will consider learning and education in the context of Renaissance politics and society.

Host: Lloyd Swanson

Italy's Three Crowns: Dante, Boccaccio, Petrarch and You

Thursday, April 30, 1:30

Straddling the Middle Ages and the Renaissance, Dante, Boccaccio, and Petrarch have a permanent influence both on Italian and on European writing and thinking. U of O Professors Warren Ginsberg, Gina Psaki, and Massimo Lollini will present these three essential figures that both cap the Middle Ages and usher in the modern world. They will introduce Dante's journey to the afterlife, and his crafting of a new poetic language; Boccaccio's reconstruction of earthly society in the wake of a devastating pandemic; and Petrarch's invention of a modern sensibility. They will discuss how and why the three crowns are still with us, almost seven centuries after they flourished.

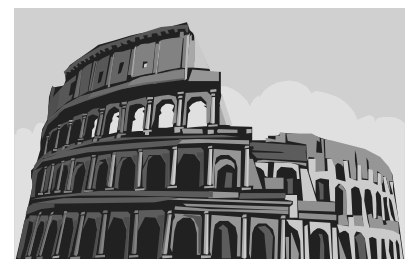
Host: David Eiseman

The High Renaissance in Rome

Thursday, May 7, 1:30

By Sixteenth century Italy, Rome had become the focal point of Italian art, even though Florence, the birthplace of the Renaissance, had sought preeminence. By 1402, Rome, once a city of a million, had shrunk to 20,000 residents. The return of the papacy in 1420 drove Renaissance Rome and art in general. Henry Sayre, OSU Distinguished Professor of Art History (Cascade Campus), will discuss the aesthetic forces the papacy set in motion.

Host: Lloyd Swanson



Italian Immigrants in America**Thursday, May 14, 1:30**

Vincenza Scarpaci, an historian of the Italian immigrant experience in America, will discuss how the cultural baggage of these migrants and their children has expressed itself within the American context. When you travel the Columbia Highway, built in 1915, are you aware that Italian stonemasons crafted the retaining walls, bridges and the Vista house? She will use images from her new book, *The Journey of the Italians in America*, to illustrate her presentation.

Host: David Eiseman

Gala Dinner -- Italiano Speciale**Wednesday May 20, 6:00 p.m.**

Antipasti : finnochiana & Toscana salamis, fresh mozzarella balls drizzled with balsamic and virgin olive oil, imported olives and peppers

Iovino's house rustic Italian bread served with virgin olive oil and balsamic for dipping.

Chopped Romaine tossed with a lemon-garlic vinaigrette and Pecorino Romano cheese, served with roasted red peppers.

Stuffed Pasta Shells filled with ricotta, mozzarella, fresh spinach and herbs, topped with a roasted garlic plum tomato sauce.

Bracciale - eye of round beef, roasted and sliced thin, rolled with swiss chard, garlic, onions, pepperoncinis and provolone, topped with a roasted garlic plum tomato sauce.

Platter of seasonal vegetables drizzled with lemon-garlic vinaigrette.

Dessert: Tiramisu

Beverages: Coffee and tea and *Cash Bar*

Location: Iovino's Ristorante, 136 SW Washington Street (corner of Washington and 1st)

Cost: \$27.00, including gratuity

Submit Payment with Class Registration

**A Taste of Italy****Thursday, May 21, 3:00 - 5:00**

Join us at Natalia & Cristoforo's Authentic Italian deli for a brief encounter with the exquisite, robust flavors of Italian wines, meats, and cheeses. After eight years focused on Italian foods, and a tour of Italy based around the vineyards producing the wines that he sells, Greg Leytem, proprietor, is a wealth of knowledge and expertise. Sampling wines and enjoying antipasto platters will be a fantastic introduction to the vast world of Italian food. Meet at Natalia and Cristoforo's, 351 NW Jackson Ave in downtown Corvallis. Limited free parking and metered parking are available, but you are encouraged to carpool from the Congregational Church. A list of participants will be sent to those who are registered. There is a \$10 charge per person. Limited to 30 people. 🚗

Host: Lloyd Swanson

Visiting and Living in Italy**Thursday, May 28, 1:30**

Community members Annette Youngberg and Kathy Holman will talk about their separate times in Italy: Annette on her Elderhostel "Splendor of Rome" trip, and Kathy on her extensive travels in the Cinque Terra area, as well as in Tuscany and Venice, while she and her husband lived in Lerici for two years. Each presentation will feature slides, historical background, and anecdotes.

Host: David Eiseman

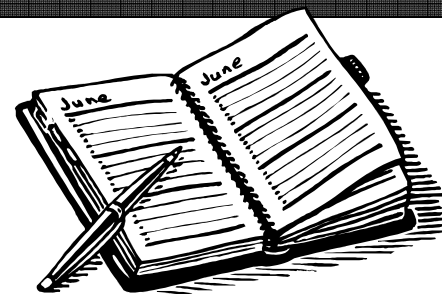
Exploring the Wine Regions of Southern and Central Italy**Thursday, June 4, 1:30**

Focusing on Italy's wine regions south of the Po River valley enhances touring the country's historic sites from Sicily to Tuscany. Mary Lee Nolan, OSU Professor Emeritus of Geography, and Sidney D. Nolan, Ph.D., will take us on a tour of the vineyards of negroamaro and primitivo grapes in Sicily and Puglia to the sangiovese of Tuscany regions of Italy, visiting historic sites and scenic attractions while enjoying the hospitality of winemakers along the way.


Host: David Eiseman



Before sending in your registration form, take a moment and either make a copy of it or use this page to note which classes you selected. You will then have a record of your expressed intentions. Exceptional dates and times are in **Bold print**. If a 🚗 symbol is shown, the class/event is not at the First Congregational Church. Please plan transportation accordingly.



1. Arts

- Tuesday, March 31, 9:30-11:30: Mini Reviews 
- Tuesday, April 7, 9:30-11:30: Carmina!
- Tuesday, April 14, 9:30-11:30: Anticipating Ashland
- Tuesday, April 21, 9:30-11:30: Contemporary Glass
- Tuesday, April 28, 9:30-11:30: Writing as Partners
- Tuesday, May 5, 9:30-11:30: Art, Artists, Galleries and Frames
- Tuesday, May 12, 9:30-11:30: Finding Artistic Eye
- Tuesday, May 19, 9:30-11:30: Music in the Twentieth Century: New Directions III
- Tuesday, May 26, 9:30-11:30: Poetry and Marriage
- Tuesday, June 2, 9:30-11:30: Public Art 🚗

2. Humanities


- Tuesday, March 31, 1:30-3:30: Steady-State Economy
- Tuesday, April 7, 1:30-3:30: Oregon v. Muller
- Tuesday, April 14, 1:30-3:30: Celebrating Lincoln
- Tuesday, April 21, 1:30-3:30: brass Media
- Tuesday, April 28, 1:30-3:30: Oregon Politics
- Tuesday, May 5, 1:30-3:30: Dust Bowl Stories
- Wednesday, May 13, 1:30-3:30: Obama's Eloquence**
- Tuesday, May 19, 1:30-3:30: Beit Am 🚗
- Tuesday, May 26, 1:30-3:30: Dick & Jane?
- Tuesday, June 2, 1:30-3:30: Benton County 

3. Science

- Wednesday, April 1, 9:30-11:30: Coffee & Health
- Wednesday, April 8, 9:30-11:30: Hesthaven Nature 🚗
- Wednesday, April 15, 9:30-11:30: Humor in Medicine
- Wednesday, April 15, 1:30-3:30: GIS**
- Wednesday, April 22, 9:30-11:30: New Berry
- Thursday, April 23, 1:30-3:30: Human DNA Evolution**
- Wednesday, April 29, 9:30-11:30: Atoms and Artifacts

- Wednesday, May 6, 9:30-11:30: Genetically Engineered Crops
- Wednesday, May 13, 9:30-11:30: West African Pests
- Wednesday, May 20, 9:30-11:30: CVHS Science 🚗
- Wednesday, May 27, 9:30-11:30: Salamanders
- Wednesday, June 3, 9:30-11:30: Tuberculosis



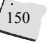

4. Issues & Ideas

- Thursday, April 2, 9:30-11:30: Great Decisions-Human Rights
- Thursday, April 9, 9:30-11:30: Eastern Oregon Rangeland
- Thursday, April 16, 9:30-11:30: Sustainability Imperative
- Thursday, April 23, 9:30-11:30: City Government
- Thursday, April 30, 9:30-11:30: Ranching in New West
- Tuesday, May 5, 7:00-9:00PM: HP Halo Project** 🚗
- Wednesday, May 6, 2:30-4:30: Heart of the Valley Choir**
- Thursday, May 7, 9:30-11:30: Panama Canal
- Thursday, May 14, 9:30-11:30: Oregon Healthcare Policy
- Thursday, May 21, 9:30-11:30: Corvallis Economic Vitality
- Thursday, May 28, 9:30-11:30: Two Family Farm Histories 
- Thursday, June 4, 9:30-11:30: Medicare

5. Italy

- Thursday, April 2, 1:30-3:30: Romans
- Monday, April 6, 1:30-3:30: Music in Italian Culture**
- Thursday, April 16, 1:30-3:30: 21st Century Italy
- Wednesday, April 22, 1:30-3:30: Renaissance Learning**
- Thursday, April 30, 1:30-3:30: Dante, Boccaccio, Petrarch
- Thursday, May 7, 1:30-3:30: High Renaissance in Rome
- Thursday, May 14, 1:30-3:30: Italian Immigrants
- Wednesday, May 20, 6:00 PM: Gala Dinner [Iovinos] \$** 🚗
- Thursday, May 21, 3:00-5:00: Taste of Italy \$** 🚗
- Thursday, May 28, 1:30-3:30: Visiting & Living in Italy
- Thursday, June 4, 1:30-3:30: Wine Regions



TUESDAY AM Arts PM Humanities	WEDNESDAY AM Science	THURSDAY AM Issues & Ideas PM Italy	Monday
 March 31 9:30-11:30 Mini Reviews 1:30-3:30 Steady-State Economy	April 1 9:30-11:30 Coffee & Health	April 2 9:30-11:30 Great Decisions: Human Rights 1:30-3:30 Romans	MONDAY April 6 1:30-3:30 Music in Italian Culture
April 7 9:30-11:30 Carmina! 1:30-3:30 Oregon v. Muller	April 8 9:30-11:30 Hesthaven Nature 🚗	April 9 9:30-11:30 Eastern Oregon Rangeland	
April 14 9:30-11:30 Anticipating Ashland 1:30-3:30 Celebrating Lincoln	April 15 9:30-11:30 Humor in Medicine 1:30-3:30 GIS	April 16 9:30-11:30 Sustainability Imperative 1:30-3:30 21 st Century Italy	
April 21 9:30-11:30 Contemporary Glass 1:30-3:30 brass Media	April 22 9:30-11:30 New Berry 1:30-3:30 Renaissance Learning	 April 23 9:30-11:30 City Government 1:30-3:30 Human DNA Evolution	Rescheduled from Winter 2009 March 10th
April 28 9:30-11:30 Writing as Partners 1:30-3:30 Oregon Politics	April 29 9:30-11:30 Atoms and Artifacts	April 30 9:30-11:30 Ranching in New West 1:30-3:30 Dante, Boccaccio, Petrarch	
May 5 9:30-11:30 Art, Artists, Galleries and Frames 1:30-3:30 Dust Bowl Stories 7:00-9:00 HP Halo Project 🚗	May 6 9:30-11:30 Genetically Engineered Crops 2:30-4:30 Heart of the Valley Choir	May 7 9:30-11:30 Panama Canal 1:30-3:30 High Renaissance in Rome	
May 12 9:30-11:30 Finding Artistic Eye	May 13 9:30-11:30 West African Pests 1:30-3:30: Obama's Eloquence	May 14 9:30-11:30 Oregon Healthcare Policy 1:30-3:30 Italian Immigrants	
May 19 9:30-11:30 Music in the 20 th Century: New Directions III 1:30-3:30 Beit Am 🚗	May 20 9:30-11:30 CVHS Science 🚗 6:00 pm Gala Dinner Italy 🚗	May 21 9:30-11:30 Corvallis Economic Vitality 3:00-5:00: Taste of Italy 🚗	
May 26 9:30-11:30 Poetry and Marriage 1:30-3:30 Dick & Jane?	May 27 9:30-11:30 Salamanders	 May 28 9:30-11:30 Two Family Farm Histories 1:30-3:30 Visiting & Living in Italy	
 June 2 9:30-11:30 Public Art 🚗 1:30-3:30 Benton County	June 3 9:30-11:30 Tuberculosis	June 4 9:30-11:30: Medicare 1:30-3:30: Wine Regions	MONDAY June 8 5:00-7:00 ALL Picnic 🚗

Academy for Lifelong Learning

A Program of the OSU Alumni Association

OSU Alumni Association
Oregon State University
204 CH2M Hill Alumni Center
Corvallis, Oregon 97331-6303

NON-PROFIT ORG
US Postage
PAID
Corvallis, OR
Permit No. 200

Learning - Enrichment - Socializing



A program of

OSU Alumni
Association

SPRING 2009
CLASSES BEGIN MARCH 31
www.ALL-osuaa.org